



E & A CONSULTING GROUP, INC.

Engineering Answers

10909 Mill Valley Road, Suite 100 • Omaha, NE 68154-3950

P 402.895.4700 • F 402.895.3599

www.eacg.com

Dear Homeowner:

The SID has contracted concrete work to be done on the streets in your SID. A contractor will be on site to do work which includes removing the existing concrete that is damaged and replacing it with new pavement.

Throughout the course of this project, there could be some minimal damage done to yards and or sprinkler systems. The contractor that is on site will be responsible for replacing any damaged sprinkler lines and/or heads. They will also be replacing any sod that is torn up while on site. Once the new sod is laid, it will be the responsibility of the homeowner at each lot to water the new sod until it has re-established itself.

Before starting the work on site, each contractor must put in a call and have all the utilities in the area located. You might notice some areas in your yard that have been flagged and/or spray painted. This does not indicate the area in which they will be working. It is just to give them an idea of what kind of utilities are in the area that could possibly be hit while the contractor is on site working.

All work that is completed in public Right-of-Way and follow City of Omaha and Sarpy County specifications.

The work in your SID should not take longer than 30 days to complete. Please let me know if you have any questions or concerns on this at all.

Thank You,

A handwritten signature in black ink, appearing to read 'Nelson C Flores', written over a horizontal line.

Nelson C Flores

Construction Administration Tech.

Engineering Answers...by assisting our clients

E & A Consulting Group, Inc.

10909 Mill Valley Road, Suite 100 • Omaha, NE 68154

402.895.4700 (o)

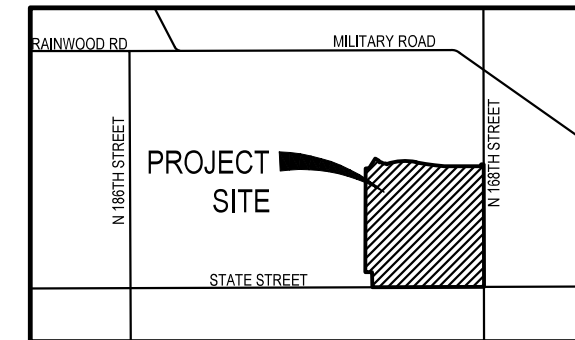
eacg.com



STRATFORD PARK

2024 STREET RECONSTRUCTION

SID NO. 528
DOUGLAS COUNTY, NEBRASKA



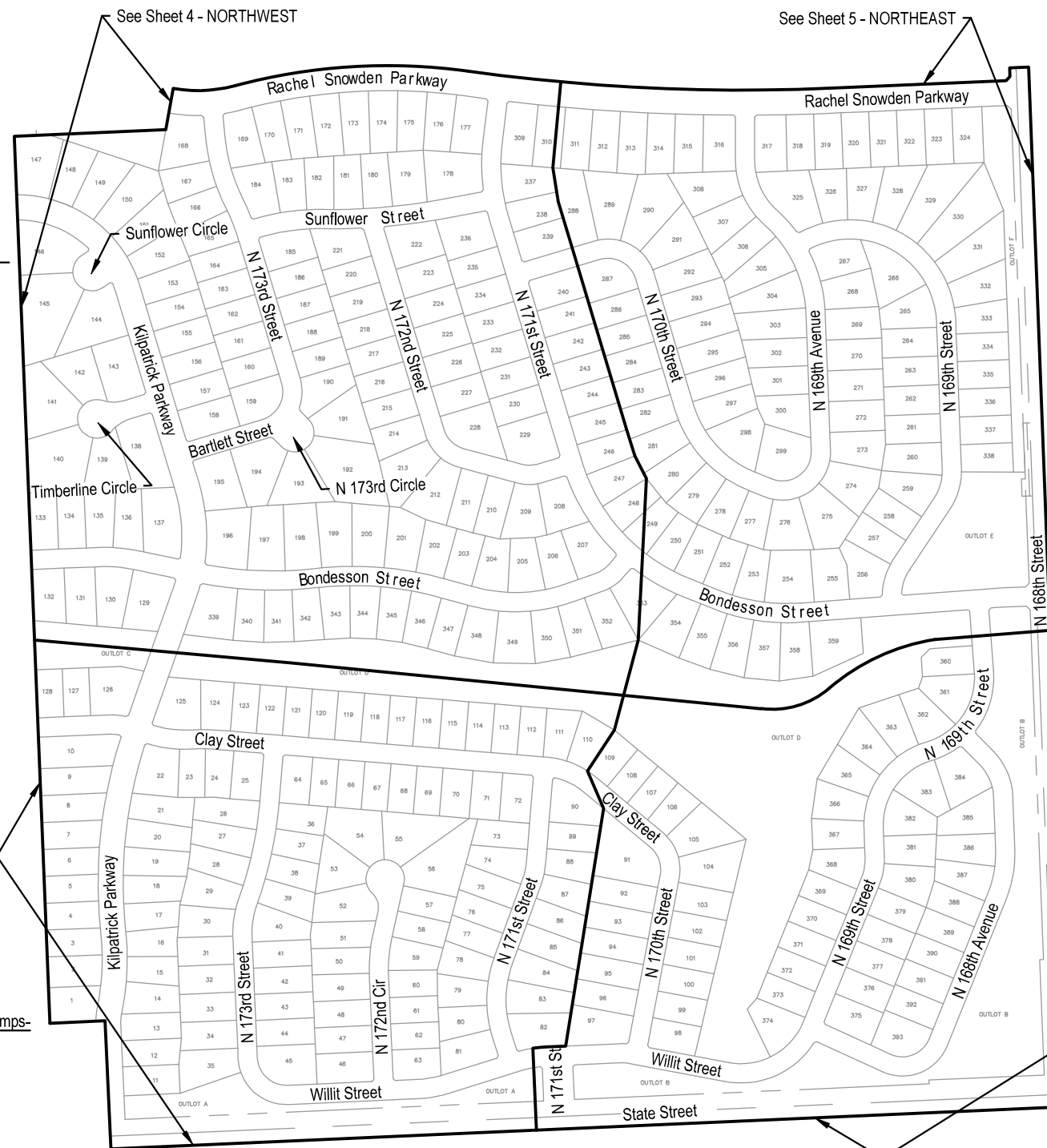
VICINITY MAP

APPROXIMATE BID QUANTITIES

ITEM	DESCRIPTION	QUANTITY	UNIT
1	CONCRETE PAVEMENT REPAIR, LARGE AREA	2,530	SY
2	CONCRETE PAVEMENT REPAIR, SMALL AREA	894	SY
3	FULL DEPTH SAW CUT EXISTING PAVEMENT	3,216	LF
4	ADJUST WATER VALVE TO GRADE	1	EA
5	ADJUST MANHOLE TO GRADE	5	EA
6	REMOVE PCC SIDEWALK	192	SF
7	REMOVE PCC CURB RAMP	422	SF
8	CONSTRUCT PCC SIDEWALK	406	SF
9	CONSTRUCT PCC CURB RAMP	144	SF
10	CONSTRUCT IMPRINTED PCC SURFACE	150	SF
11	CONSTRUCT DETECTABLE WARNING PANEL (2 locations)	16	SF
12	REMOVE AND REPLACE FAULTY SUBGRADE	25	TN
13	ADJUST SPRINKLER (AS NEEDED)	2	EA

INDEX OF SHEETS

SHEET NO.	DESCRIPTION
1	COVER
2	SOUTHEAST
3	SOUTHWEST
4	NORTHWEST
5	NORTHEAST
6	TOTAL QUANTITIES
7	COMPOSITE MAP



NOTE TO BIDDERS

- All project procedures, materials, bonds and reserves shall conform to the City of Omaha's Standard Specifications for Public Works Construction, 2024 Edition ("Standard Specifications"). It is the responsibility of the CONTRACTOR to be familiar with the contents of the Standard Specifications. The Standard Specifications can be found at: <https://publicworks.cityofomaha.org/contractors-consultants2/contractors/standard-plates-curb-ramps-and-specifications>
- References to "Standard Plates" refers to the City of Omaha's 2024 Standard Plate list. These Standard Plates can be found at: <https://publicworks.cityofomaha.org/2024-standard-plate>

The CONTRACTOR is referred to the following Standard Plates for use on this project:

PLATE NO.	DESCRIPTION	REVISION DATE
1002-02-1, 3, 4	Pavement Repair	02/13/2024

APPLICANT

SID # 528
John Wells, Chairman
11440 West Center Road, Ste. C
Omaha, NE 68144
P: 402.334.0700
F: 402.334.0815
jh@fdjlaw.com

DESIGNER

E & A Consulting Group, Inc
Teresa Wooten, P.E.
10909 Mill Valley Road, Suite 100
Omaha, NE 68154
P: 402.895.4700
F: 402.895.3599
twooten@eacg.com

INSPECTOR

E & A Consulting Group, Inc
Randall L. Pierce, P.E.
10909 Mill Valley Road, Suite 100
Omaha, NE 68154
P: 402.895.4700
F: 402.895.3599
rpierce@eacg.com

CONTRACTOR

E & A CONSULTING GROUP, INC.
Engineering • Planning • Environmental & Field Services
10909 Mill Valley Road, Suite 100 • Omaha, NE 68154
Phone: 402.895.4700 • Fax: 402.895.3599
www.eacg.com
State of NE Certificate of Authorization NC40008



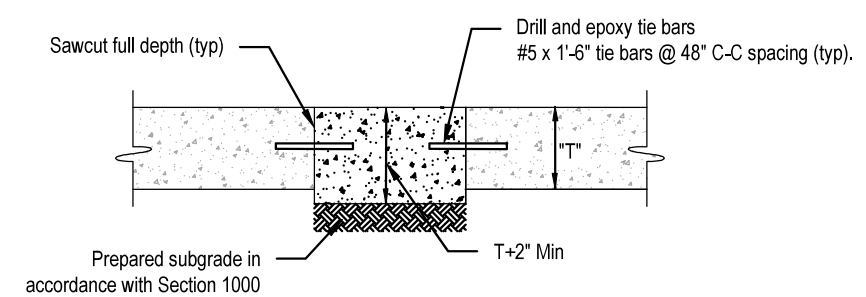
STRATFORD PARK
2024 STREET
RECONSTRUCTION
SID 528
DOUGLAS COUNTY, NEBRASKA

COVER

Revisions	Date	Description
1	05/07/2024	TAM
2		ESB
3		T = 40%
4		1 of 8



2024 STREET RECONSTRUCTION									
AREA NO.	NO. POURS	SAW CUT L.F.	CURB L.F.	WIDTH	X	LENGTH	LARGE AREA EST S.Y.	SMALL AREA EST S.Y.	NOTES
1	2	50	30	15.0	x	25.0		41.7	
2	2	115	90	12.5	x	90.0	125.0		
3	1	55	30	12.5	x	30.0		41.7	
4	1	40	15	12.5	x	15.0		20.8	
5	1	50	60	25.0	x	30.0	83.3		
6	2	65	45	15.0	x	25.0	41.7		
7	2	43	45	15.0	x	17.0		28.3	
				15.0	x	9.0		15.0	
				20.5	x	65.0	148.1		
8	6	148	255	25.0	x	26.0	72.2		
				12.8	x	87.0	123.3		
				12.8	x	78.5	111.2		
18	1	40	15	12.5	x	15.0		20.8	
19	1	40	15	12.5	x	15.0		20.8	
20	1	115	90	12.5	x	90.0	125.0		



SMALL AREA CONCRETE PAVEMENT REPAIR DETAIL
 NOT TO SCALE

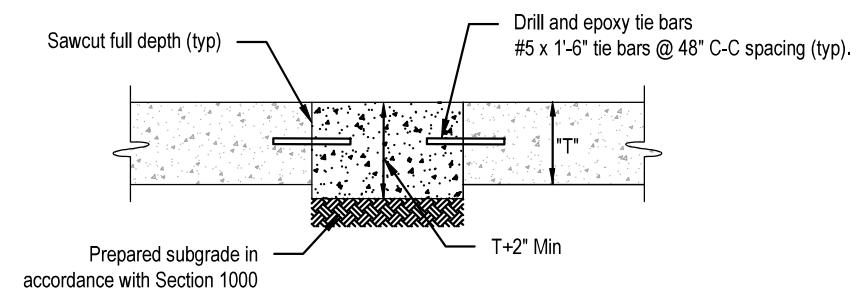


E & A CONSULTING GROUP, INC. Engineering • Planning • Environmental & Field Services <small>10809 Mill Valley Road, Suite 100 • Omaha, NE 68154 Phone: 402.265.4700 • Fax: 402.265.2599 www.eaeg.com State of NE Certificate of Authorization #CA0008</small>	
STRATFORD PARK 2024 STREET RECONSTRUCTION <small>SID 528 DOUGLAS COUNTY, NEBRASKA</small>	
SOUTHEAST	
Proj No: 2008195413 Date: 05/07/2024 Design By: TAM Drawn By: ESB Scale: T = 20' Sheet: 2 of 8	Revisions Date Description
K:\Projects\2008\1954\p13\Engineering\CAD Files\Paving\Stratford Park 2024 Street Reconstruction-000.dwg 5/7/2024 4:30 PM Evan Nelson	



2024 STREET RECONSTRUCTION									
AREA NO.	NO. POURS	SAW CUT L.F.	CURB L.F.	WIDTH	X	LENGTH	LARGE AREA EST S.Y.	SMALL AREA EST S.Y	NOTES
9	1	20	15	10.0	x	10.0		11.1	
10	1	40	15	12.5	x	15.0		20.8	
11	1	40	15	12.5	x	15.0		20.8	
12	1	40	15	12.5	x	15.0		20.8	
13	2	90	45	15.0	x	25.0	41.7		Adjust Manhole
				12.5	x	15.0	20.8		
14	1	40	15	12.5	x	15.0		20.8	
15	1	40	15	12.5	x	15.0		20.8	
16	1	40	15	12.5	x	15.0		20.8	
17	2	50	30	15.0	x	25.0		41.7	
21	1	70	45	12.5	x	45.0	62.5		
22	1	16	10	3.0	x	10.0		3.3	Curb Inlet Throat
23	2	156	10	2.5	x	45.0		12.5	Adjust Manhole
				8.0	x	10.0		8.9	
24	1	40	15	12.5	x	15.0		20.8	
				12.5	x	17.0		23.6	Curb Inlet Throat
25	2	55	30	12.5	x	30.0		41.7	

2024 STREET RECONSTRUCTION					
AREA NO.	TYPE	APPROX. DIMEN.		EST S.F.	NOTES
A	Curb Ramp	7.75	x 24.25	187.9	Remove
	Curb Ramp	6.00	x 12.00	72.0	Construct & Adjust Water Valve & ADA Plate - Cast Iron
B	Sidewalk	4.00	x 24.00	96.0	Remove
	Sidewalk	4.50	x 21.50	96.8	Construct & Adjust Sprinkler (As Needed)
	Sidewalk	5.00	x 21.25	106.3	Construct
C	Imprinted Surface	6.00	x 12.50	75.0	Construct



SMALL AREA CONCRETE PAVEMENT REPAIR DETAIL
 NOT TO SCALE



E & A CONSULTING GROUP, INC.
 Engineering • Planning • Environmental & Field Services
 10809 Mill Valley Road, Suite 100 • Omaha, NE 68154
 Phone: 402.265.4700 • Fax: 402.265.2559
 www.eandagroup.com
 State of NE Certificate of Authorization #CA0008

E & A CONSULTING GROUP, INC.
 Engineering Answers

**STRATFORD PARK
 2024 STREET
 RECONSTRUCTION**
 SID 528
 DOUGLAS COUNTY, NEBRASKA

SOUTHWEST

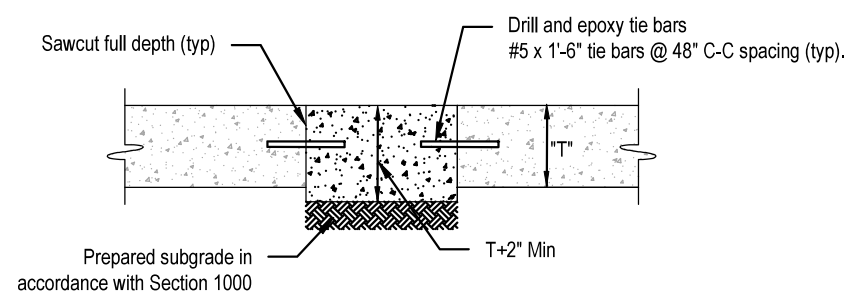
Proj No: 2008195413
 Date: 05/07/2024
 Designed By: TMM
 Drawn By: ESB
 Scale: T = 20'
 Sheet: 3 of 8

5/7/2024 4:30 PM
 K:\Projects\2008\195413\Engineering\CAD Files\ paving\Stratford Park 2024 Street Reconstruction-000.dwg
 Evan Nelson



2024 STREET RECONSTRUCTION									
AREA NO.	NO. POURS	SAW CUT L.F.	CURB L.F.	WIDTH	X	LENGTH	LARGE AREA EST S.Y.	SMALL AREA EST S.Y.	NOTES
26	1	40	15	12.5	x	15.0		20.8	
27	2	50	210	25.0	x	105.0	291.7		
28	2	13		15.0	x	20.0	33.3		
				15.0		25.0	41.7		
29	1	55	30	12.5	x	30.0		41.7	
30	2	95	75	12.5	x	45.0	62.5		
				12.5	x	30.0	41.7		
31	1	40	15	12.5	x	15.0		20.8	
32	1	55	30	12.5	x	30.0		41.7	
41	1	40	15	12.5	x	15.0		20.8	
42	2	50	30	15.0	x	25.0		41.7	
43	1	55	30	12.5	x	30.0		41.7	
44	1	40	15	12.5	x	15.0		20.8	
45	2	50	60	25.0	x	30.0	83.3		Adjust Manhole
46	2	50	30	15.0	x	25.0		41.7	
47	2	50	30	15.0	x	25.0		41.7	

2024 STREET RECONSTRUCTION					
AREA NO.	TYPE	APPROX. DIMEN.		EST S.F.	NOTES
D	Curb Ramp	9.00	x 26.00	234.0	Remove
	Curb Ramp	6.00	x 12.00	72.0	Construct & ADA Plate - Cast Iron
E	Sidewalk	4.00	x 24.00	96.0	Remove
	Sidewalk	4.50	x 21.50	96.8	Construct & Adjust Sprinkler (As Needed)
	Sidewalk	5.00	x 21.25	106.3	Construct
F	Imprinted Surface	6.00	x 12.50	75.0	Construct



SMALL AREA CONCRETE PAVEMENT REPAIR DETAIL
 NOT TO SCALE



E & A CONSULTING GROUP, INC.
 Engineering • Planning • Environmental & Field Services
 11809 Mill Valley Road, Suite 100 • Omaha, NE 68154
 Phone: 402.265.4700 • Fax: 402.265.2559
 www.eandagroup.com
 State of NE Certificate of Authorization #CA0008

E & A CONSULTING GROUP, INC.
 Engineering Answers

STRATFORD PARK
 2024 STREET
 RECONSTRUCTION
 SID 528
 DOUGLAS COUNTY, NEBRASKA

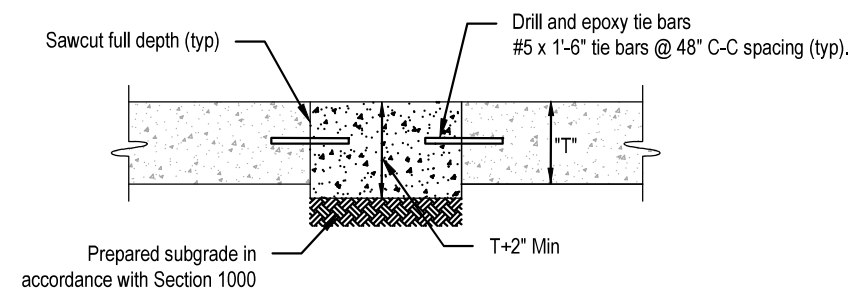
NORTHWEST

Proj No: 2008195413
 Date: 05/07/2024
 Design By: TMM
 Drawn By: ESN
 Scale: T = 20'
 Sheet: 4 of 8

5/7/2024 4:30 PM
 K:\Projects\2008\195413\Engineering\CAD Files\Paving\Stratford Park 2024 Street Reconstruction-000.dwg
 Evan Nelson



2024 STREET RECONSTRUCTION									
AREA NO.	NO. POURS	SAW CUT L.F.	CURB L.F.	WIDTH	X	LENGTH	LARGE AREA EST S.Y.	SMALL AREA EST S.Y.	NOTES
33	1	70	45	12.5	x	30.0	41.7		Adjust Manhole
				12.5	x	15.0	20.8		
34	1	45	15	12.5	x	15.0		20.8	
35	1	60	30	12.5	x	30.0		41.7	
36	1	160	135	12.5	x	135.0	187.5		
37	1	130	105	12.5	x	105.0	145.8		
38	1	190	165	12.5	x	165.0	229.2		
39	1	145	120	12.5	x	120.0	166.7		
40	1	85	60	12.5	x	60.0	83.3		
48	2	110	90	12.5	x	60.0	83.3		Adjust Manhole
				12.5	x	30.0	41.7		
49	1	40	15	12.5	x	15.0		20.8	



SMALL AREA CONCRETE PAVEMENT REPAIR DETAIL
 NOT TO SCALE



E & A CONSULTING GROUP, INC.
 Engineering • Planning • Environmental & Field Services
 11089 Mill Valley Road, Suite 100 • Omaha, NE 68154
 Phone: 402.654.7100 • Fax: 402.654.2559
 www.eandagroup.com
 State of NE Certificate of Authorization #CA0008

E & A CONSULTING GROUP, INC.
 Engineering Answers

**STRATFORD PARK
 2024 STREET
 RECONSTRUCTION**
 SID 528
 DOUGLAS COUNTY, NEBRASKA

NORTHEAST

Proj No: 2008195413
 Date: 05/07/2024
 Designed By: TMM
 Drawn By: ESB
 Scale: T = 20'
 Sheet: 5 of 8

5/7/2024 4:30 PM
 K:\Projects\2008195413\Engineering\CAD Files\Paving\Stratford Park 2024 Street Reconstruction-000.dwg
 Evan Nelson



2024 STREET RECONSTRUCTION									
AREA NO.	NO. POURS	SAW CUT L.F.	CURB L.F.	WIDTH	X	LENGTH	LARGE AREA EST S.Y.	SMALL AREA EST S.Y.	NOTES
1	2	50	30	15.0	x	25.0		41.7	
2	2	115	90	12.5	x	90.0	125.0		
3	1	55	30	12.5	x	30.0		41.7	
4	1	40	15	12.5	x	15.0		20.8	
5	1	50	60	25.0	x	30.0	83.3		
6	2	65	45	15.0	x	25.0	41.7		
				12.5	x	15.0	20.8		
7	2	43	45	15.0	x	17.0		28.3	
				15.0	x	9.0		15.0	
8	6	148	255	25.0	x	26.0	72.2		
				20.5	x	65.0	148.1		
				12.8	x	87.0	123.3		
				12.8	x	78.5	111.2		
9	1	20	15	10.0	x	10.0		11.1	
10	1	40	15	12.5	x	15.0		20.8	
11	1	40	15	12.5	x	15.0		20.8	
12	1	40	15	12.5	x	15.0		20.8	
13	2	90	45	15.0	x	25.0	41.7		Adjust Manhole
				12.5	x	15.0	20.8		
14	1	40	15	12.5	x	15.0		20.8	
15	1	40	15	12.5	x	15.0		20.8	
16	1	40	15	12.5	x	15.0		20.8	
17	2	50	30	15.0	x	25.0		41.7	
18	1	40	15	12.5	x	15.0		20.8	
19	1	40	15	12.5	x	15.0		20.8	
20	1	115	90	12.5	x	90.0	125.0		
21	1	70	45	12.5	x	45.0	62.5		
22	1	16	10	3.0	x	10.0		3.3	Curb Inlet Throat
23	2	156	10	2.5	x	45.0		12.5	Adjust Manhole
				8.0	x	10.0		8.9	
24	1	40	15	12.5	x	15.0		20.8	
				12.5	x	17.0		23.6	Curb Inlet Throat
25	2	55	30	12.5	x	30.0		41.7	
26	1	40	15	12.5	x	15.0		20.8	

2024 STREET RECONSTRUCTION									
AREA NO.	NO. POURS	SAW CUT L.F.	CURB L.F.	WIDTH	X	LENGTH	LARGE AREA EST S.Y.	SMALL AREA EST S.Y.	NOTES
27	2	50	210	25.0	x	105.0	291.7		
28	2	13		15.0	x	20.0	33.3		
				15.0		25.0	41.7		
29	1	55	30	12.5	x	30.0		41.7	
30	2	95	75	12.5	x	45.0	62.5		
				12.5	x	30.0	41.7		
31	1	40	15	12.5	x	15.0		20.8	
32	1	55	30	12.5	x	30.0		41.7	
33	1	70	45	12.5	x	30.0	41.7		Adjust Manhole
				12.5	x	15.0	20.8		
34	1	45	15	12.5	x	15.0		20.8	
35	1	60	30	12.5	x	30.0		41.7	
36	1	160	135	12.5	x	135.0	187.5		
37	1	130	105	12.5	x	105.0	145.8		
38	1	190	165	12.5	x	165.0	229.2		
39	1	145	120	12.5	x	120.0	166.7		
40	1	85	60	12.5	x	60.0	83.3		
41	1	40	15	12.5	x	15.0		20.8	
42	2	50	30	15.0	x	25.0		41.7	
43	1	55	30	12.5	x	30.0		41.7	
44	1	40	15	12.5	x	15.0		20.8	
45	2	50	60	25.0	x	30.0	83.3		Adjust Manhole
46	2	50	30	15.0	x	25.0		41.7	
47	2	50	30	15.0	x	25.0		41.7	
48	2	110	90	12.5	x	60.0	83.3		Adjust Manhole
				12.5	x	30.0	41.7		
49	1	40	15	12.5	x	15.0		20.8	

2024 STREET RECONSTRUCTION					
AREA NO.	TYPE	APPROX. DIMEN.		EST S.F.	NOTES
A	Curb Ramp	7.75	x 24.25	187.9	Remove
	Curb Ramp	6.00	x 12.00	72.0	Construct & Adjust Water Valve & ADA Plate - Cast Iron
B	Sidewalk	4.00	x 24.00	96.0	Remove
	Sidewalk	4.50	x 21.50	96.8	Construct & Adjust Sprinkler (As Needed)
	Sidewalk	5.00	x 21.25	106.3	Construct
C	Imprinted Surface	6.00	x 12.50	75.0	Construct
D	Curb Ramp	9.00	x 26.00	234.0	Remove
	Curb Ramp	6.00	x 12.00	72.0	Construct & ADA Plate - Cast Iron
E	Sidewalk	4.00	x 24.00	96.0	Remove
	Sidewalk	4.50	x 21.50	96.8	Construct & Adjust Sprinkler (As Needed)
	Sidewalk	5.00	x 21.25	106.3	Construct
F	Imprinted Surface	6.00	x 12.50	75.0	Construct



10809 Mill Valley Road, Suite 100 • Omaha, NE 68154
 Phone: 402.265.4700 • Fax: 402.265.2559
 www.eandagroup.com
 State of NE Certificate of Authorization #CA0008

E & A CONSULTING GROUP, INC.
 Engineering • Planning • Environmental & Field Services

Engineering Answers

STRATFORD PARK
2024 STREET
RECONSTRUCTION
SID 528
DOUGLAS COUNTY, NEBRASKA

TOTAL QUANTITIES

Proj No: 2008195413
 Date: 05/07/2024
 Designed By: TAM
 Drawn By: ESB
 Scale: N/A
 Sheet: 6 of 6

5/7/2024 4:30 PM

Evan Nelson

K:\Projects\2008\195\p13\Engineering\CAD Files\Paving\Stratford Park 2024 Street Reconstruction-000.dwg




See Sheet 4 - NORTHWEST

See Sheet 5 - NORTHEAST

See Sheet 3 - SOUTHWEST

See Sheet 2 - SOUTHEAST



													
E & A CONSULTING GROUP, INC. Engineering • Planning • Environmental & Field Services <small>10809 Mill Valley Road, Suite 100 • Omaha, NE 68154 Phone: 402.265.4700 • Fax: 402.265.2559 www.eaconsulting.com State of NE Certificate of Authorization #CA0008</small>													
STRATFORD PARK 2024 STREET RECONSTRUCTION <small>SID 528 DOUGLAS COUNTY, NEBRASKA</small>													
COMPOSITE MAP													
<table border="1" style="width: 100%; border-collapse: collapse;"> <thead> <tr> <th style="font-size: small;">Revisions</th> <th style="font-size: small;">Date</th> <th style="font-size: small;">Description</th> </tr> </thead> <tbody> <tr> <td style="font-size: x-small;">1</td> <td style="font-size: x-small;">05/07/2024</td> <td style="font-size: x-small;">TMM</td> </tr> <tr> <td style="font-size: x-small;">2</td> <td style="font-size: x-small;"></td> <td style="font-size: x-small;">ESB</td> </tr> <tr> <td style="font-size: x-small;">3</td> <td style="font-size: x-small;"></td> <td style="font-size: x-small;">T</td> </tr> </tbody> </table>	Revisions	Date	Description	1	05/07/2024	TMM	2		ESB	3		T	5/7/2024 4:30 PM Evan Nelson
Revisions	Date	Description											
1	05/07/2024	TMM											
2		ESB											
3		T											